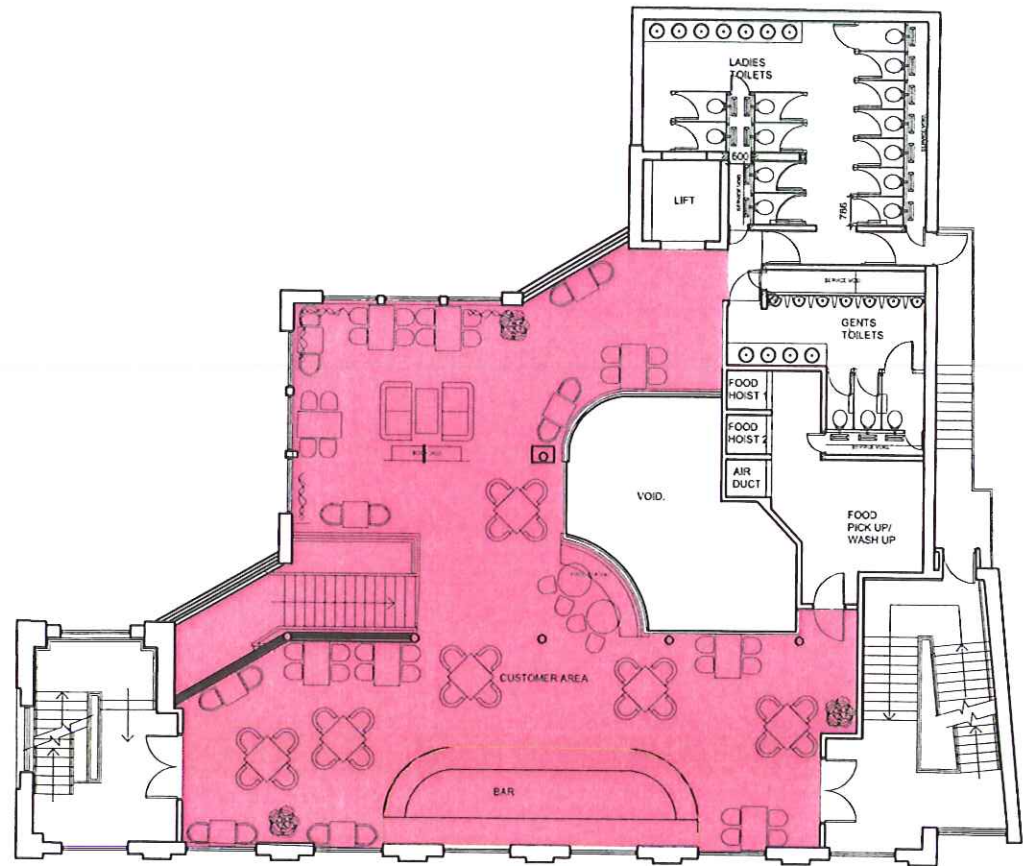
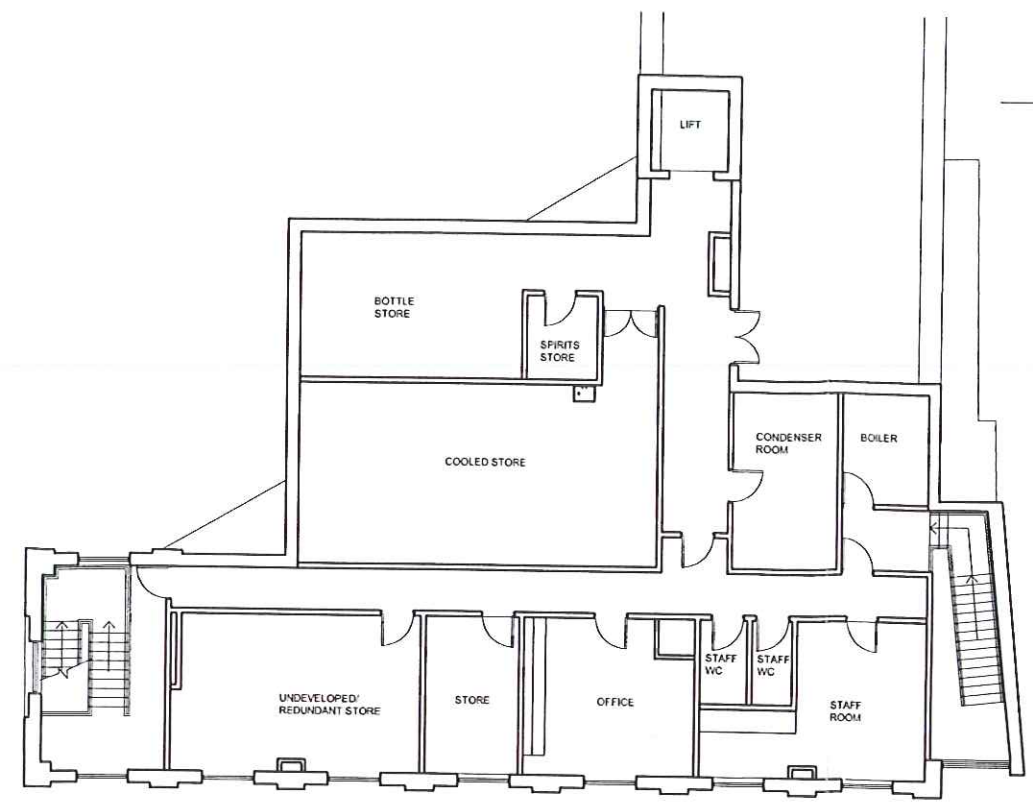


Do not scale off this drawing. All dimensions to be checked on site prior to manufacture and construction. This drawing is the property of Harrison Ince Partnership and should not be reproduced without permission. All discrepancies to be brought to the attention of the architect immediately. This drawing to be read in conjunction with the specification / bill of quantities and related drawings.

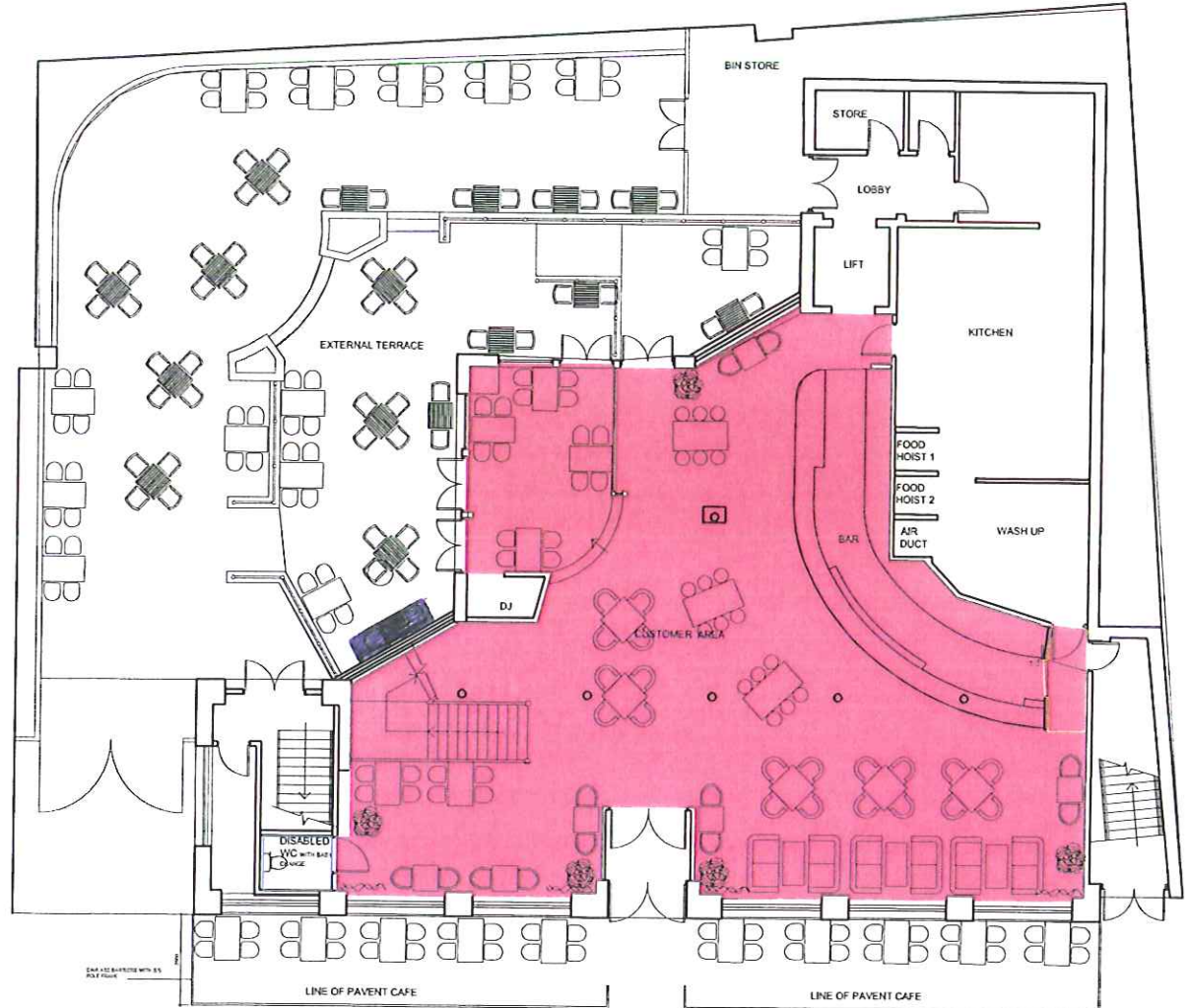
REVISIONS
FIRST ISSUE



PROPOSED FIRST FLOOR



PROPOSED SECOND FLOOR



PROPOSED GROUND FLOOR

KEY
 [Pink shaded area] AREA FOR SALE OF ALCOHOL, PROVISION OF LATE NIGHT REFRESHMENT AND REGULATED ENTERTAINMENT.
 [Blue shaded area] outside Bar

- FIRE AUTHORITY REQUIREMENTS**
- F30 HALF HOUR FIRE RESISTANT WITH SMOKE SEALS & INTUMESCENT STRIPS
 - F60 ONE HOUR FIRE RESISTANT WITH SMOKE SEALS & INTUMESCENT STRIPS
 - VP VISION PANEL
 - PB PANIC BOLT
 - SC SELF-CLOSING
 - SCA SELF-CLOSING AUTOMATIC RELEASE
 - FL FUSIBLE LINK
 - DS DOOR SELECTOR
 - S14 'FIRE DOOR KEEP LOCKED' 10mm LETTERS TO BOTH SIDES OF DOOR LEAF
 - [Symbol] ILLUMINATED MAINTAINED 'FIRE EXIT' SIGN
 - [Symbol] AREA COVERED BY ESCAPE LIGHTING TO BS 5266 PART 1
 - [Symbol] AREA COVERED BY SMOKE DETECTORS-BSEN 547
 - [Symbol] AREA COVERED BY HEAT DETECTORS
 - [Symbol] FIRE ALARM CALL POINT
 - [Symbol] FIRE ALARM INDICATOR PANEL
 - [Symbol] FIRE BLANKET IN CONTAINER
 - [Symbol] CARBON DIOXIDE FIRE EXTINGUISHER
 - [Symbol] 9 LITRE WATER EXTINGUISHER
 - [Symbol] DRY POWDER EXTINGUISHER
 - [Symbol] FOAM FIRE EXTINGUISHER
 - [Symbol] ALARM WARNING DEVICE (voice type in Customer areas) music sound system to be de-activated

MAGISTRATE NOTES

FIRE ALARM SYSTEM TO CUT OUT MUSIC/SOUND SYSTEM ONCE ACTIVATED

ALL WALLS AND PARTITIONS TO BE MINIMUM HALF HOUR FIRE RESISTANT

EMERGENCY LIGHTING TO COMPLY WITH BS 5266 PART 1

FIRE SAFETY RELATED SIGNS AND NOTICES TO COMPLY TO BS 5499

FIRE FIGHTING EQUIPMENT TO COMPLY WITH BS 5306 WALL AND CEILING LININGS ARE TO BE CLASS 1 SURFACE SPREAD OF FLAME (AS DEFINED BY BS 476 CLASS 0) IN ESCAPE ROUTES

UPHOLSTERED SEATING FURNITURE TO SATISFY THE FOLLOWING

- * IGNITION SOURCE (CIGARETTE TEST) AS SPECIFIED IN BS 5852 PART 1
- * FIRE TEST FOR FURNITURE METHODS OF TEST FOR THE IGNITABILITY BY SMOKERS
- * BS 5852 PART 2 FIRE TEST FOR FURNITURE METHODS OF TEST FOR THE IGNITABILITY OF UPHOLSTERED COMPOSITES FOR TESTING BY FLAMING SOURCE, MINIMUM TEST TO BE CRIB IGNITION SOURCE 5 FABRICS THAT HAVE HAD A FLAME RETARDANT TREATMENT TO PASS THE WATER SOAK TEST AS DETAILED BY BS 5651 TEST CERTIFICATE TO BE SUBMITTED TO FIRE AUTHORITY

CURTAINS AND DRAPES TO SATISFY TYPE B PERFORMANCE REQUIREMENTS TO BS 5852 PART 2

ARTIFICIAL FOLIAGE AND DECORATIVE EFFECTS TO BE FIRE RETARDANT TO THE SATISFACTION OF THE FIRE AUTHORITY

TOILETS

ALL WALLS TILED FULL HEIGHT SANITARY FACILITIES HAVE BEEN DESIGNED TO BS 6465 PART 1 1994 CODE OF PRACTICE FOR THE SCALE AND PROVISION. SELECTION AND INSTALLATION OF SANITARY APPLIANCES

KITCHEN

ALL WALLS TO BE WHITEROCK TO FULL HEIGHT THROUGHOUT.

GENERAL

ALL WALLS AND CEILING FINISHES IN CIRCULATION AREAS TO COMPLY WITH CLASS 0 SPREAD OF FLAME CHARACTERISTICS. ALL WALLS AND CEILING FINISHES TO PUBLIC AREAS TO HAVE CLASS 1 SPREAD OF FLAME CHARACTERISTICS IN ACCORDANCE WITH BS 476 PART 7 1971.

DOOR TYPES:

- FD - NEW HALF HOUR 30/33 FIRE DOOR, SELF CLOSING WITH 30/30 FRAME. ALL FIRE DOORS TO BE FITTED WITH INTUMESCENT / SMOKE SEALS. ALL LOCKABLE DOORS TO HAVE INTERNAL THUMBSTUNS
- EXTERNAL FIRE EXIT DOORS TO BE FITTED WITH PANIC BOLTS. ANY LOW LEVEL GLAZING IN DOORS TO BE FITTED WITH SAFETY GLASS IN ACCORDANCE WITH BS6206
- F8 - EXTERNAL DOOR ON FRAME WITH PANIC BOLT
- VP - ALL DOORS INDICATED TO HAVE A LOW LEVEL GEORGIAN WIRE VISION PANEL (GLASS TO BE SET IN INTUMESCENT PASTE WITH HARDWOOD BEADING)

ALL NEW UPHOLSTERY COVERINGS TO BE BS 5852 PART 1: 1999 OF BS 5852 PART 2 WITH IGNITION RESISTANCE REQUIREMENTS OF BS 7176 OR DOE PS493 SPECIFICATION AS APPROPRIATE. FURNITURE TO CONFORM TO BS 7176 AND TO CARRY LABEL STATING TO WHICH HAZARD CATEGORY THEY COMPLY.

CURTAINS, DRAPES AND OTHER DECORATIVE MATERIALS TO BE INHERENTLY NON-FLAMMABLE OR DURABLY FLAME PROOFED AND TO CONFORM WITH BS 5857 PART 2 FABRIC TYPE B. TEXTILE FLOOR COVERINGS TO BE TESTED TO BS 4790 1987 (DETERMINATION OF FLAMMABILITY - HOT METAL NUT TEST) TO HAVE A LOW RADIUS OF EFFECTS OF IGNITION (35MM). ARTIFICIAL FOLIAGE TO BE INHERENTLY FLAME RETARDANT OR TREATED WITH A FIRE RETARDANT SOLUTION AND TO BE BEDDED IN NON-COMBUSTIBLE MATERIALS TO BS 5852 PART 1. PFA GRANULES OR SIMILAR MATERIALS (CERTIFICATE TO BE PROVIDED BY CONTRACTOR)

FIRE ALARM SYSTEM

THE PROPOSED FIRE ALARM TO COMPLY WITH BS 5839 : PART 1 : 1988

EMERGENCY LIGHTING

THE SYSTEM TO COMPLY WITH BS 5266 AND INCORPORATE ADEQUATE ILLUMINATION OF ALL EXTERNAL STEPS WHICH SERVE EXIT DOORS.

FIRE STOPPING

FIRE STOPPING TO BE INSERTED INTO CEILING AS REQUIRED TO CREATE PROTECTED STAIRS, LOBBIES, CORRIDORS ETC

ALL VENTILATION DUCTS, PIPES ETC PASSING THROUGH COMPARTMENT FLOORS AND WALLS TO BE PROTECTED BY QUELFIRE FIRE COLLARS

NOTICES

NOTICES WITH THE WORDS "PUSH BAR TO OPEN" TO BE DISPLAYED ON ALL DOORS FITTED WITH PANIC BOLTS OR PANIC LATCHES.

ALL FIRE RESISTING SELF CLOSING DOORS ARE TO BE PERMANENTLY MARKED ON EACH SIDE AT EYE LEVEL WITH A BLUE CIRCULAR NOTICE BEARING THE WORDS "FIRE DOOR - KEEP SHUT" IN WHICH LETTERS ARE TO BE NOT LESS THAN 5MM IN HEIGHT.

DRAINAGE

SANITARY PIPE WORK IS TO COMPLY WITH PROVISION OF BS 6572:1978. FOUL DRAINAGE IS TO COMPLY WITH THE PROVISION OF BS 6301:1985 AND IS TO BE LAID IN ACCORDANCE WITH THE DRAINAGE DRAWINGS. SINK WASTE TO BE 38MM DIAMETER AND FITTED WITH A 75MM DEEP SEAL ANTI-VAC TRAP. COMBINED WASTES TO BE 50MM WC AND SOIL PIPES TO BE 100MM DIAMETER WITH SVP TERMINATING 900MM ABOVE EAVES LINE (DRAINS LAID TO FALL 1:40). RAINWATER DRAINAGE IS TO COMPLY WITH THE PROVISIONS OF BS 6307:1983 AND BS 6301:1985. ALL PIPE WORK PASSING THROUGH THE EXTERNAL WALLS TO HAVE CONCRETE LINTEL OVER R/WP TO FALL INTO BACK INLET GULLIES. ALL PIPE WORK IS TO BE SURROUNDED IN 150MM CONCRETE. ALL PIPE WORK PASSING THROUGH THE EXTERNAL WALLS TO HAVE CONCRETE LINTEL OVER INTERNAL MANHOLES TO BE CONSTRUCTED WITH 215MM SOLID ENGINEERING BRICKWORK TO BS 3921 WITH REMOVABLE NON-VENTILATED STEEL COVERS WITH 150MM CONCRETE BASE AT THE BENCHING. ALL TO ENGINEERS ADVICE/TALS.

DISABLED TOILET TO COMPLY WITH PART M BUILDING REGULATIONS

DISABLED TOILET

VENTILATION

TOILETS, BATHROOMS AND KITCHENS TO HAVE MECHANICAL VENTILATION CAPABLE OF EXTRACTING AIR AT A RATE OF NOT LESS THAN 3 AIR CHANGES PER HOUR WITH 15 MINUTE OVER-RUN LINED TO LIGHT SWITCH. ALL TO M & E CONSULTANTS DETAILS CALCULATIONS.

STAIRS, STEPS AND GUARDINGS

TO COMPLY WITH PART M AND K. BALUSTRADING TO BE CAPABLE OF RESISTING A FORCE OF 0.74KN/M. TO ENGINEERS DETAIL/ADVICE.

GLAZING

ALL GLAZING BELOW 800MM TO BE LAMINATED. ALL GLAZING TO DOORS BELOW 1500MM TO BE LAMINATED GLASS TO COMPLY WITH PART L2. PROVIDE MANIFESTATION AS NECESSARY.

REFER TO M&E DRAWINGS FOR DRAINAGE & BUILDERS WORK REQS FOR DUCTWORK. REFER TO BACK OF HOUSE DATA SHEETS FOR DETAILS, FITTINGS AND FINISHES. REFER TO FRONT OF HOUSE DATA SHEETS FOR DETAILS, FITTINGS AND FINISHES.

HARRISON INCE ARCHITECTS INTERIOR DESIGNERS

client **JD WETHERSPOON PLC**

project **THE CORDWAINER PN6158 THE RIDINGS, NORTHAMPTON, NN1 2AQ**

title **PROPOSED GROUND FLOOR PLAN**

date **APRIL 2012** scale **1:100 @ A1**

job no. **JD231** drawing no. **AW05 Rev A**

drawn **CAD/TT** checked