

**Northampton Borough Council Scrutiny Panel 1  
Serious Acquisitive Crime/ Community Safety  
*Performance & Hotspot Data.***

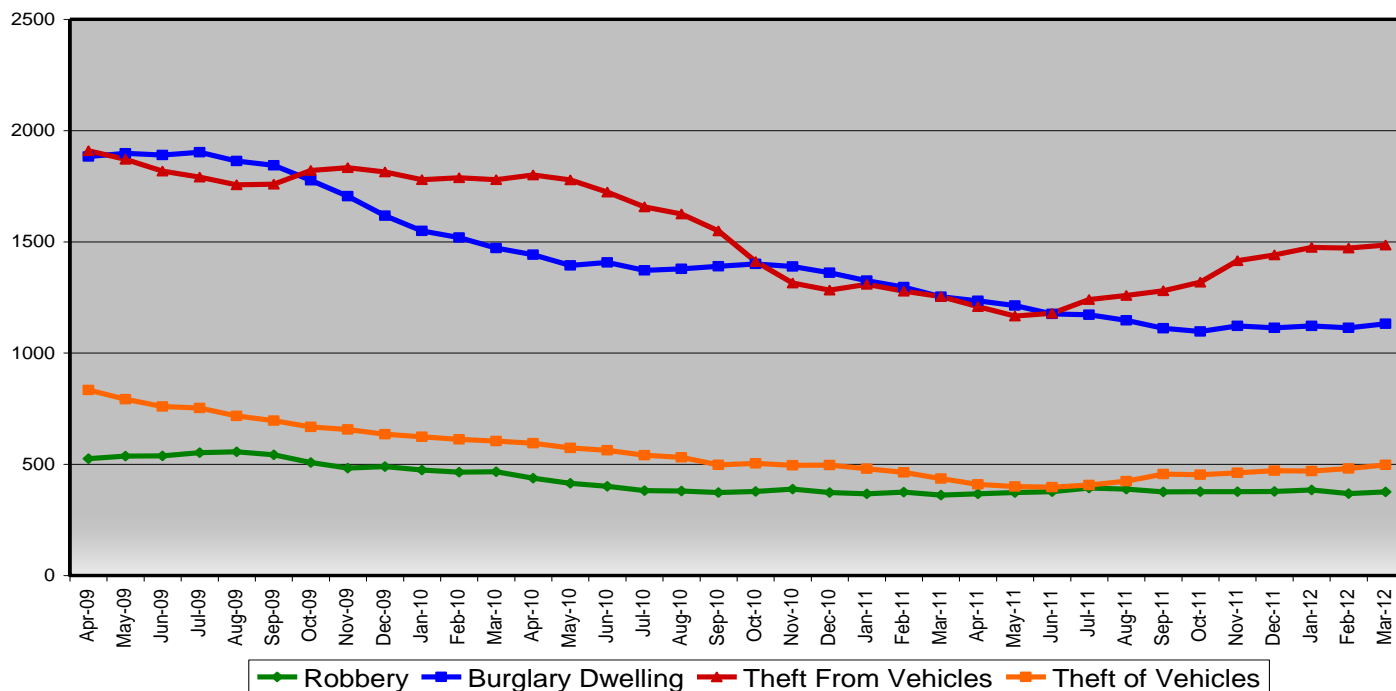
**Contents**

- Performance Data by Crime Type
- 2011/12 Performance Data by Crime Type
- 2011/12 Performance Data by Sector
- 2011/12 Hotspot Location Performance Data by Priority Wards
- Most Similar CSP Comparative Performance
- Cross County Comparative Performance

## SAC Performance Data by Crime Type (2009/10 – 2011/12)

The graph below shows the volume of all four elements of serious acquisitive crime on a 12 month rolling total.

**Breakdown Of Serious Acquisitive Crime by Crime Type**



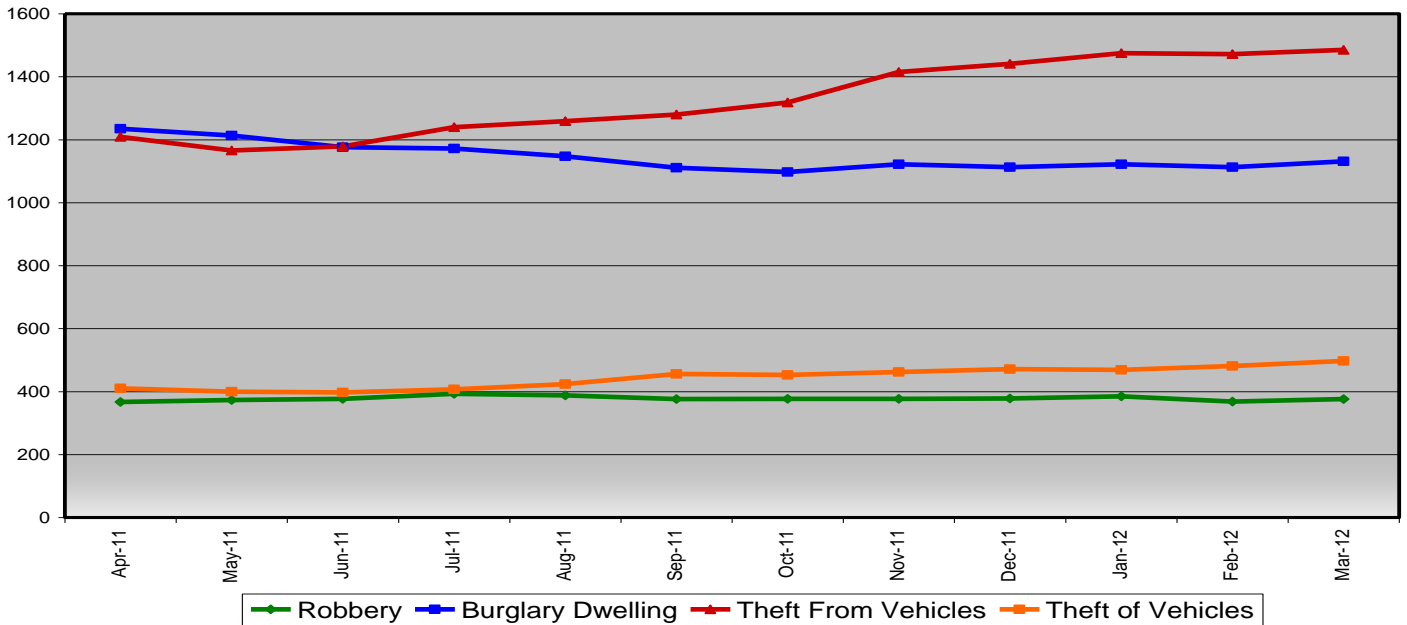
The table below shows the annual percentage change in all four elements of serious acquisitive crime in the past three years.

Northampton: Annual SAC Performance by Crime Type								
Crime Type	2008/09		2009/10		2010/11		2011/12	
	Volume	Annual % Change	Volume	Annual % Change	Volume	Annual % Change	Volume	Annual % Change
Burglary Dwelling	1882		1472	-21.8%	1253	-14.9%	1131	-9.7%
Theft from Vehicles	1965		1779	-9.5%	1254	-29.5%	1485	18.4%
Theft of Vehicles	854		601	-29.6%	436	-27.5%	497	14.0%
Robbery	503		426	-15.3%	361	-15.3%	376	4.2%
<b>Total SAC</b>	<b>5204</b>		<b>4278</b>	<b>-17.8%</b>	<b>3304</b>	<b>-22.8%</b>	<b>3489</b>	<b>5.6%</b>

**SAC Performance Data by Crime Type 2011/12**

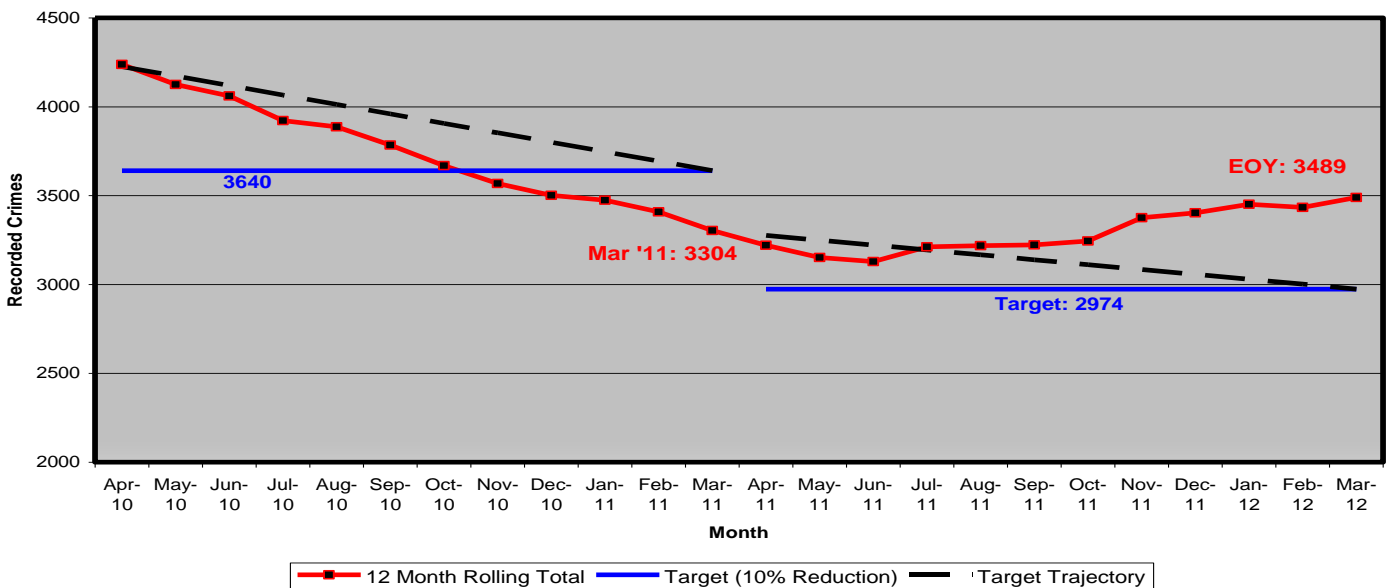
The graph below shows the volume of all four elements of serious acquisitive crime on a 12 month rolling total in 2011/12 only.

**Breakdown Of Serious Acquisitive Crime by Crime Type**



The graph below shows the volume of serious acquisitive crime against the CSP annual targets on a 12 month rolling total.

**Serious Acquisitive Crime  
Rolling 12 Month Totals**



**SAC Performance Data by Sector 2011/12**

The tables below show the annual percentage change in three elements of SAC (theft from and theft of vehicles is grouped together) in each sector of Northampton during 2011/12.

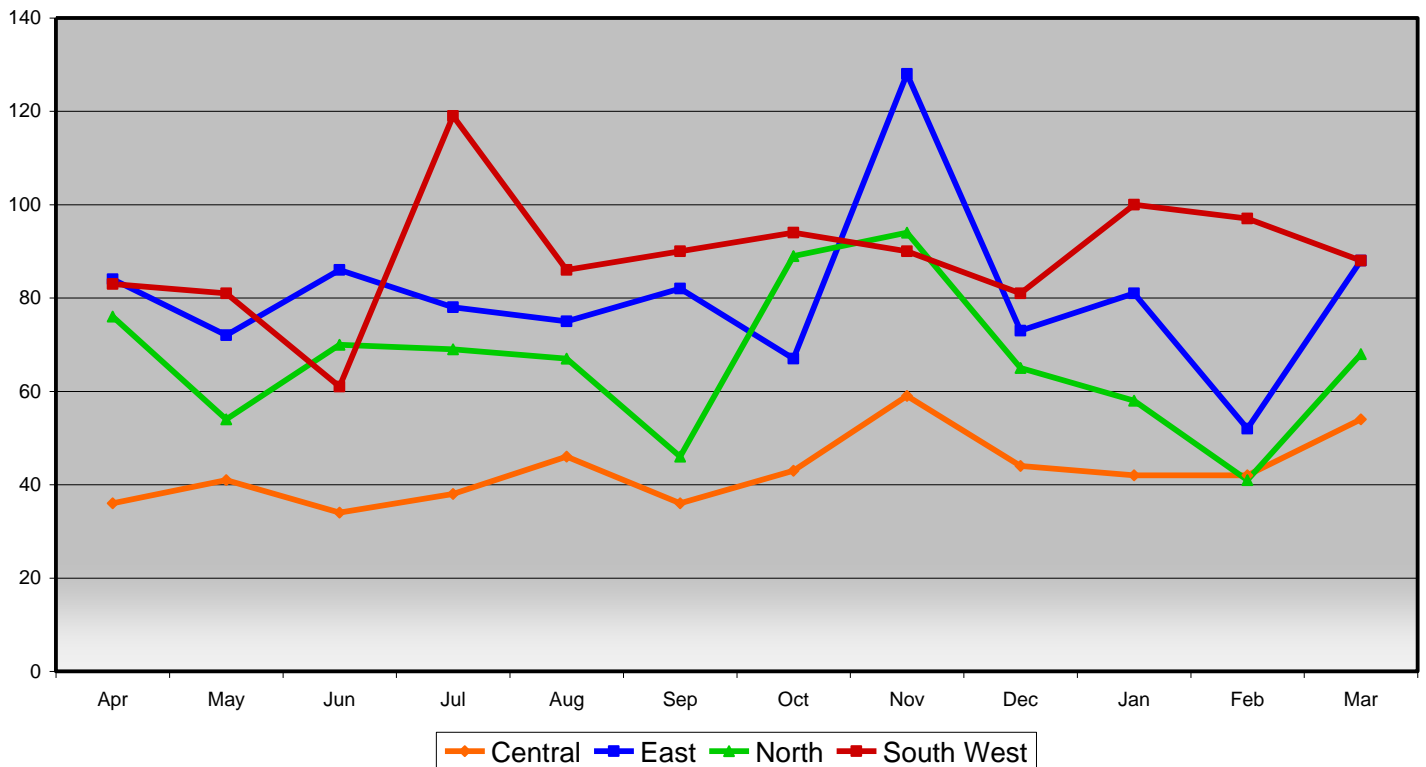
Central Sector				East Sector			
Crime Type	Volume		Change	Crime Type	Volume		Change
	2010/11	2011/12			2010/11	2011/12	
Burglary Dwelling	182	171	-6.0%	Burglary Dwelling	401	314	-21.7%
Vehicle Crime	292	260	-11.0%	Vehicle Crime	479	542	13.2%
Robbery	122	84	-31.1%	Robbery	100	110	10.0%
Total SAC	596	515	-13.6%	Total SAC	980	966	-1.4%

North Sector				South West Sector			
Crime Type	Volume		Change	Crime Type	Volume		Change
	2010/11	2011/12			2010/11	2011/12	
Burglary Dwelling	354	264	-25.4%	Burglary Dwelling	316	362	14.6%
Vehicle Crime	465	442	-4.9%	Vehicle Crime	439	638	45.3%
Robbery	82	91	11.0%	Robbery	55	70	27.3%
Total SAC	901	797	-11.5%	Total SAC	810	1070	32.1%

The graph below shows the monthly volume of total SAC offences in each sector during 2011/12.

**Monthly Volume of SAC Offences by Sector**



## SAC Performance Data by Ward 2011/12

The tables below show the percentage change in three elements of serious acquisitive crime (theft from and theft of vehicles is grouped together) in the top ten wards for SAC in Northampton.

*NB: This data is YTD figures up to 04/03/12 only.*

*NB: The wards below are based upon pre 2011 ward boundaries, as the police still work to these.*

Abington				Lumbertubs			
Crime Type	Volume		Change	Crime Type	Volume		Change
	2010/11 YTD	2011/12 YTD			2010/11 YTD	2011/12 YTD	
Burglary Dwelling	63	74	17.5%	Burglary Dwelling	86	38	-55.8%
Vehicle Crime	107	87	-18.7%	Vehicle Crime	72	69	-4.2%
Robbery	28	27	-3.6%	Robbery	29	32	10.3%
Total SAC	198	188	-5.1%	Total SAC	187	139	-25.7%

Billing				Spencer			
Crime Type	Volume		Change	Crime Type	Volume		Change
	2010/11 YTD	2011/12 YTD			2010/11 YTD	2011/12 YTD	
Burglary Dwelling	62	46	-25.8%	Burglary Dwelling	65	57	-12.3%
Vehicle Crime	98	129	31.6%	Vehicle Crime	75	157	109.3%
Robbery	15	18	20.0%	Robbery	8	13	62.5%
Total SAC	175	193	10.3%	Total SAC	148	227	53.4%

Castle				St Crispins			
Crime Type	Volume		Change	Crime Type	Volume		Change
	2010/11 YTD	2011/12 YTD			2010/11 YTD	2011/12 YTD	
Burglary Dwelling	77	85	10.4%	Burglary Dwelling	88	73	-17.0%
Vehicle Crime	129	131	1.6%	Vehicle Crime	139	116	-16.5%
Robbery	65	39	-40.0%	Robbery	50	38	-24.0%
Total SAC	271	255	-5.9%	Total SAC	277	227	-18.1%

Delapre				St James			
Crime Type	Volume		Change	Crime Type	Volume		Change
	2010/11 YTD	2011/12 YTD			2010/11 YTD	2011/12 YTD	
Burglary Dwelling	60	60	0.0%	Burglary Dwelling	38	67	76.3%
Vehicle Crime	62	95	53.2%	Vehicle Crime	83	110	32.5%
Robbery	10	10	0.0%	Robbery	10	9	-10.0%
Total SAC	132	165	25.0%	Total SAC	131	186	42.0%

Kingsley				Thorplands			
Crime Type	Volume		Change	Crime Type	Volume		Change
	2010/11 YTD	2011/12 YTD			2010/11 YTD	2011/12 YTD	
Burglary Dwelling	75	65	-13.3%	Burglary Dwelling	58	51	-12.1%
Vehicle Crime	99	95	-4.0%	Vehicle Crime	66	71	7.6%
Robbery	27	17	-37.0%	Robbery	13	15	15.4%
Total SAC	201	177	-11.9%	Total SAC	137	137	0.0%

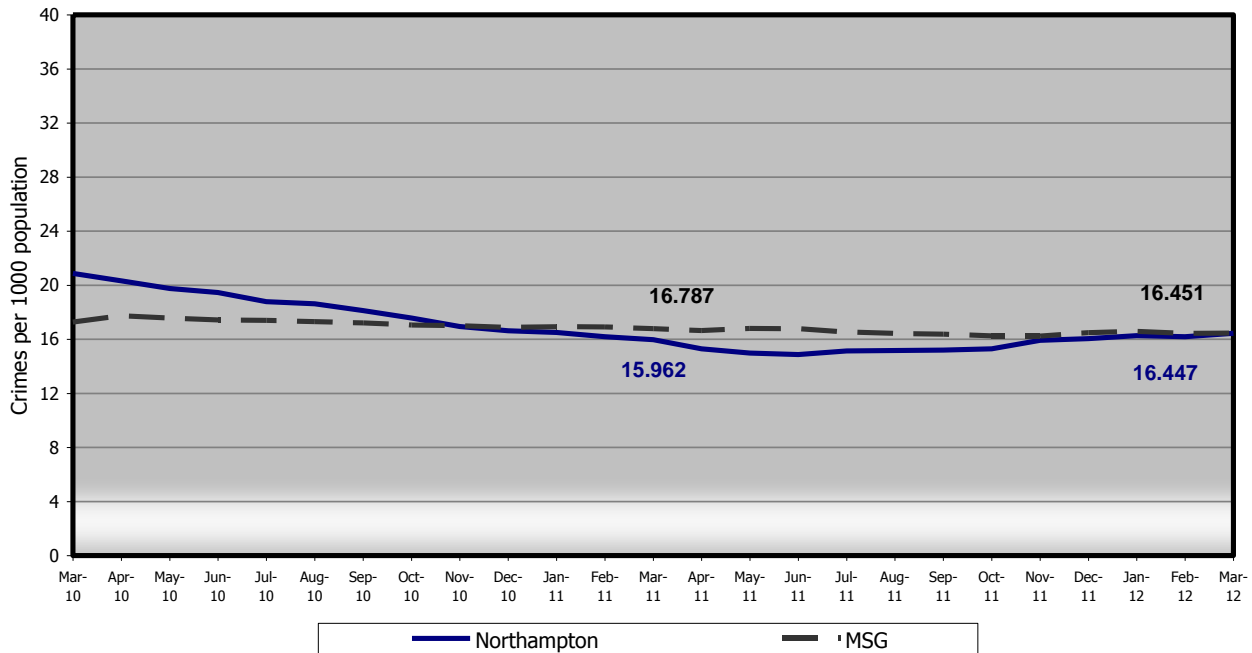
**Comparative Performance Against Most Similar CSPs.**

Community Safety Partnerships are placed in groups of fifteen Partnerships defined by the Home Office as having enough similar characteristics to allow a reasonable comparison of their performance: this is known as the Most Similar Group. A list of CSPs in Northampton’s most similar group is below.

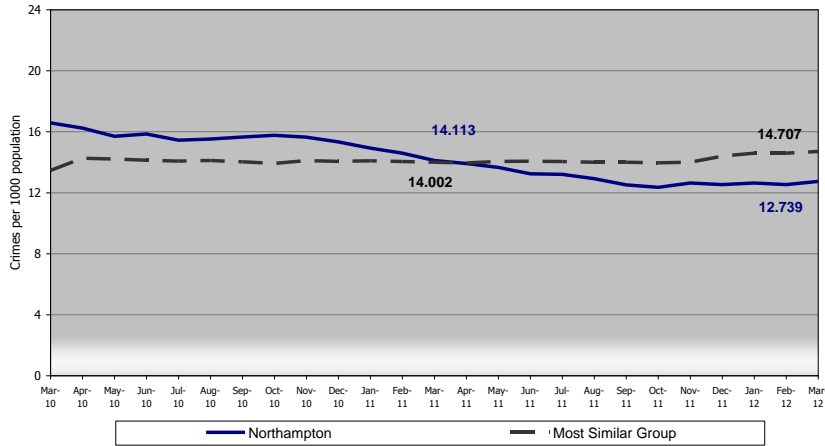
<ul style="list-style-type: none"> <li>• Bedfordshire – Luton</li> <li>• Devon &amp; Cornwall – Plymouth</li> <li>• Devon &amp; Cornwall – Torbay</li> <li>• Gloucestershire – Gloucester</li> <li>• Greater Manchester – Trafford</li> <li>• Kent – Dartford &amp; Gravesham</li> <li>• Lancashire – Blackpool</li> <li>• Metropolitan Police – Hillingdon</li> </ul>	<ul style="list-style-type: none"> <li>• Metropolitan Police – Hounslow</li> <li>• <b>Northamptonshire - Northampton</b></li> <li>• Suffolk – Ipswich</li> <li>• Thames Valley – Milton Keynes</li> <li>• Thames Valley – Slough</li> <li>• West Midlands – Coventry</li> <li>• Wiltshire - Swindon</li> </ul>
--	--

The graphs below show Northampton CSP’s performance against the average for our most similar groups. Performance is monitored in terms of crimes per 1000 population.

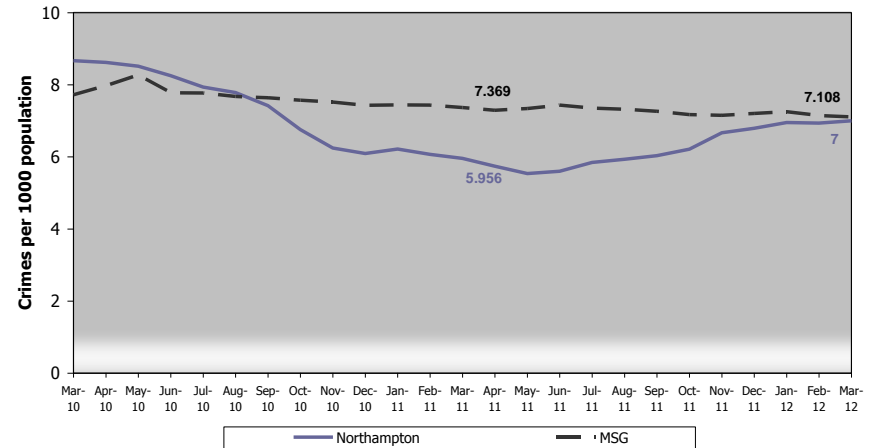
**Serious Acquisitive Crime  
Most Similar Group Comparison**



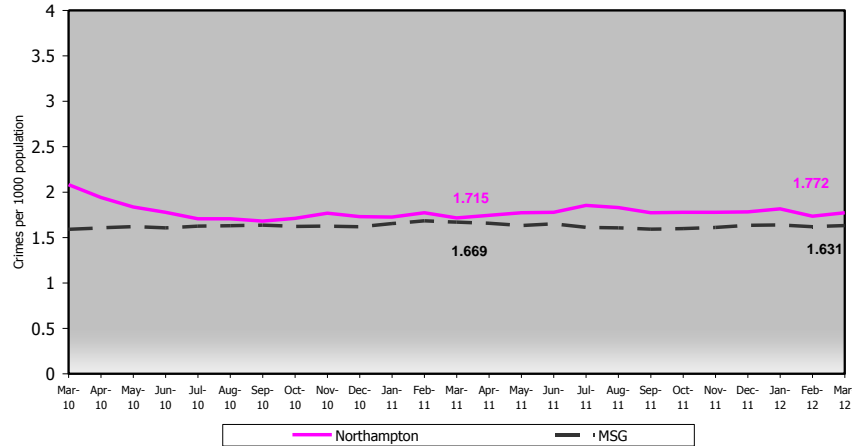
**Domestic Burglary**  
Most Similar Group comparison



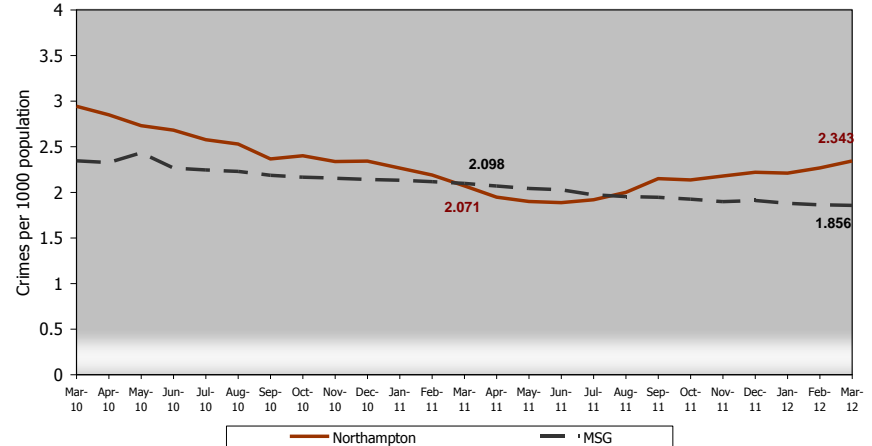
**Theft from Vehicle**  
Most Similar Group comparison



**Robbery**  
Most Similar Group comparison



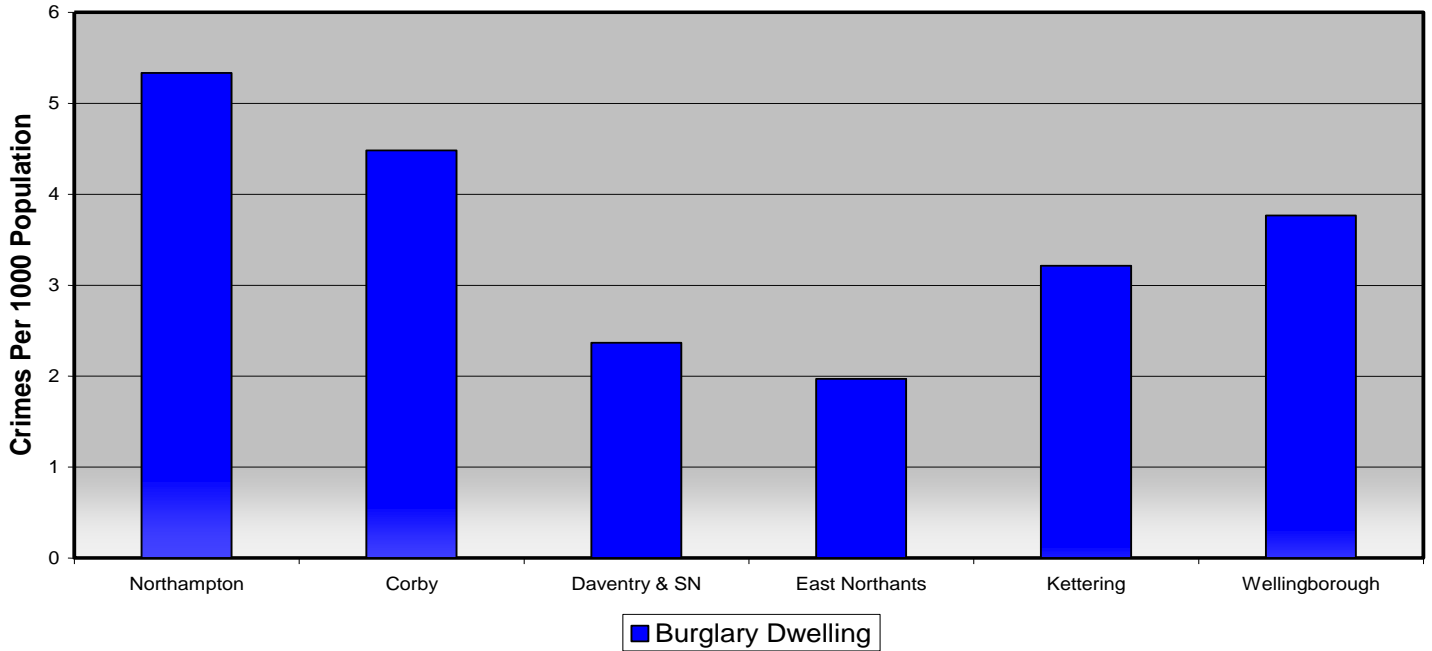
**Theft of Vehicle**  
Most Similar Group comparison



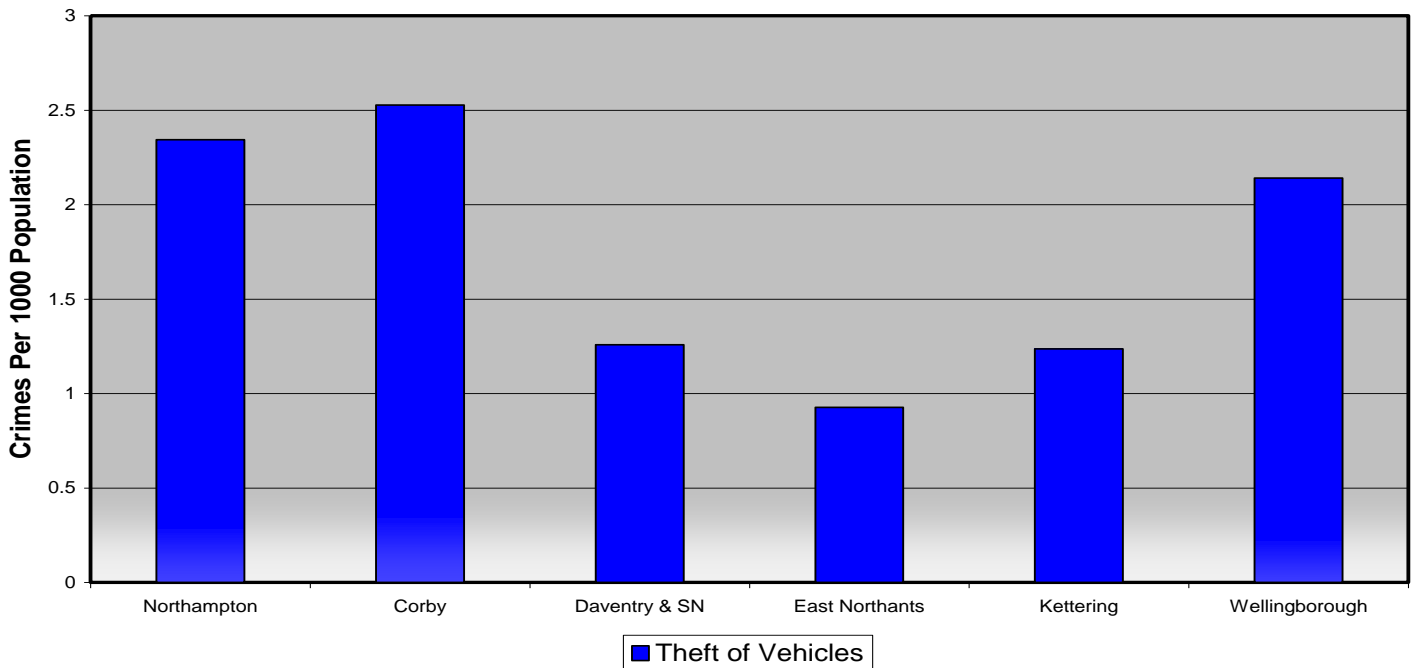
**Cross County Comparative Performance**

The graphs below show how Northampton compares to other localities within the county for all four elements of serious acquisitive crime. To allow reasonable comparison, accounting for population differences, the volume of crime is shown in terms of crimes per 1000 population.

**Burglary Dwelling: Crimes Per 1000 Population (2011/12)**

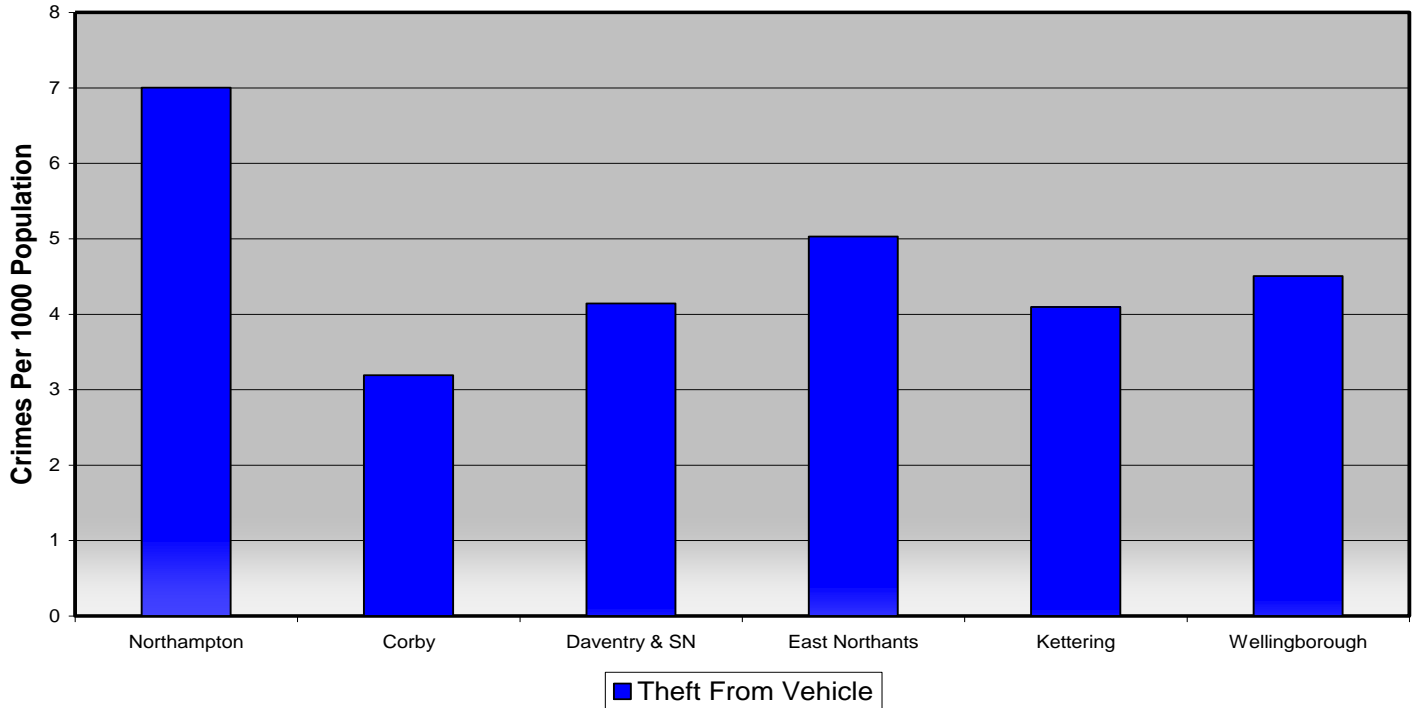


**Theft Of Vehicles: Crimes Per 1000 Population (2011/12)**





**Theft From Vehicles: Crimes Per 1000 Population (2011/12)**



**Robbery: Crimes Per 1000 Population (2011/12)**

