

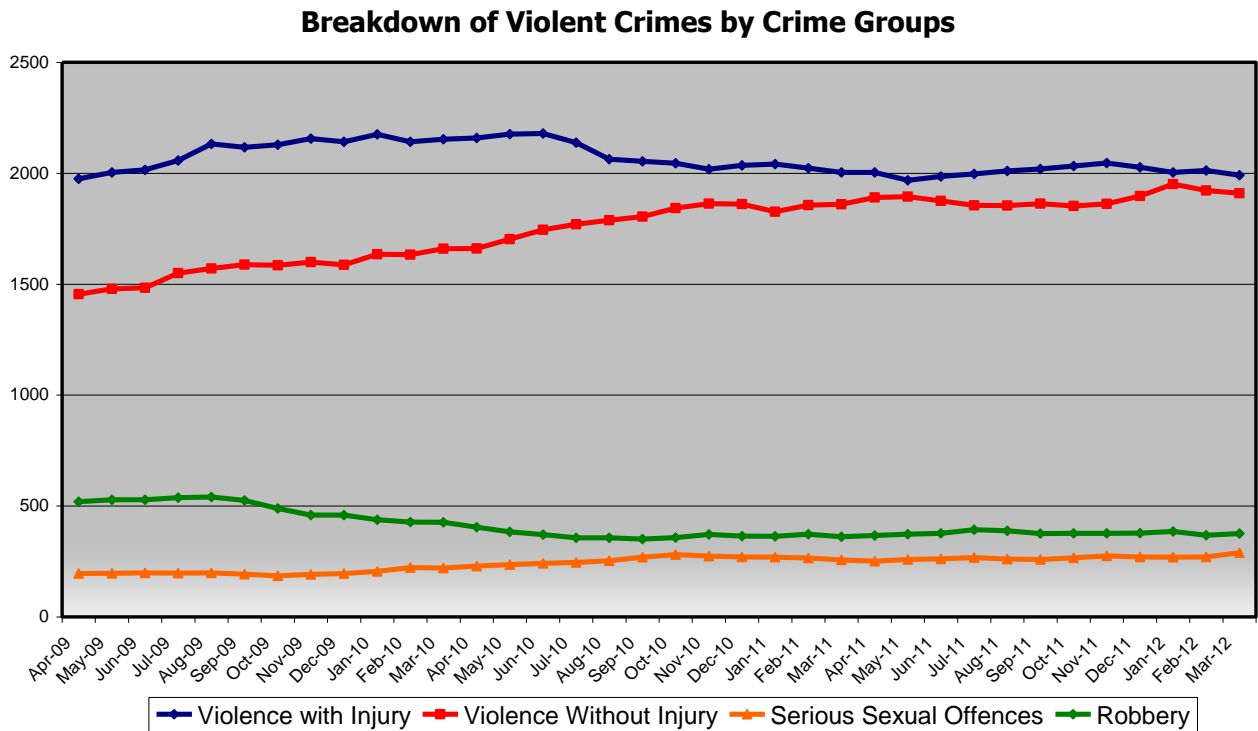
Northampton Borough Council Scrutiny Panel 1
Violent Crime/ Community Safety
Performance & Hotspot Data.

Contents

- Performance Data by Crime Group
- 2011/12 Performance Data by Crime Type
- 2011/12 Performance Data by Sector
- 2011/12 Hotspot Location Performance Data by Priority Wards
- Most Similar CSP Comparative Performance
- Cross County Comparative Performance

Violence Performance Data by Crime Group (2009/10 – 2011/12)

The graph below shows the volume of the key elements of violent crime on a 12 month rolling total.

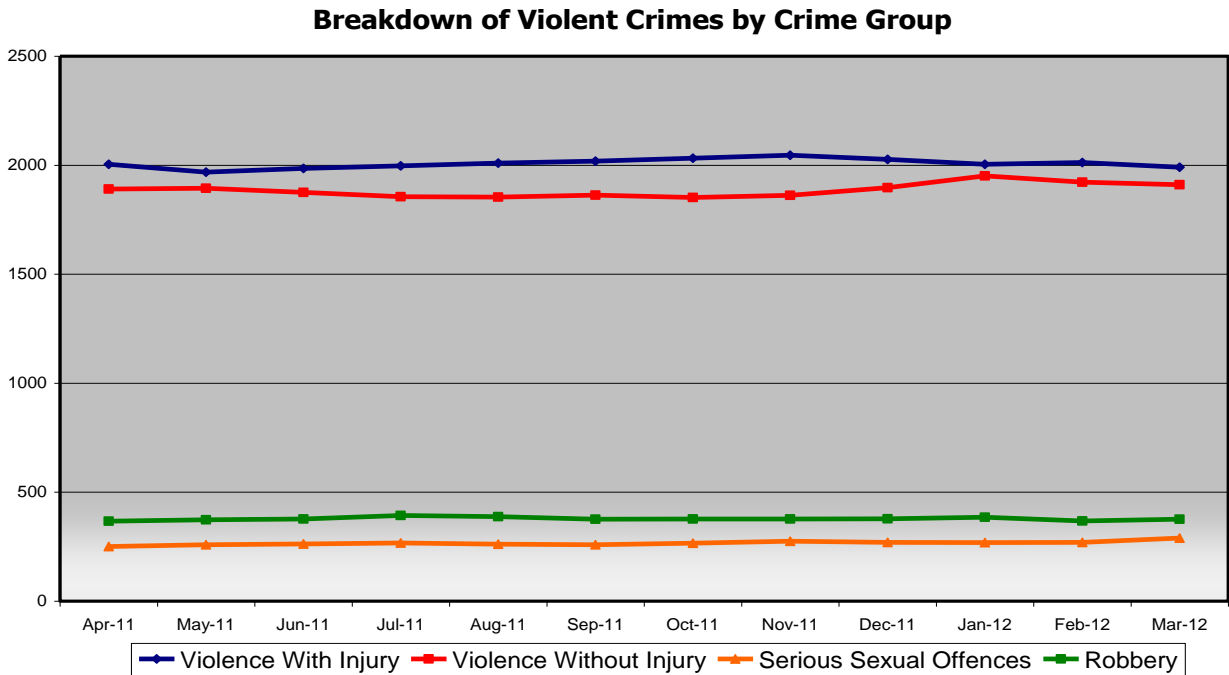


The table below shows the annual percentage change in volume of the key elements of violent crime in the past three years.

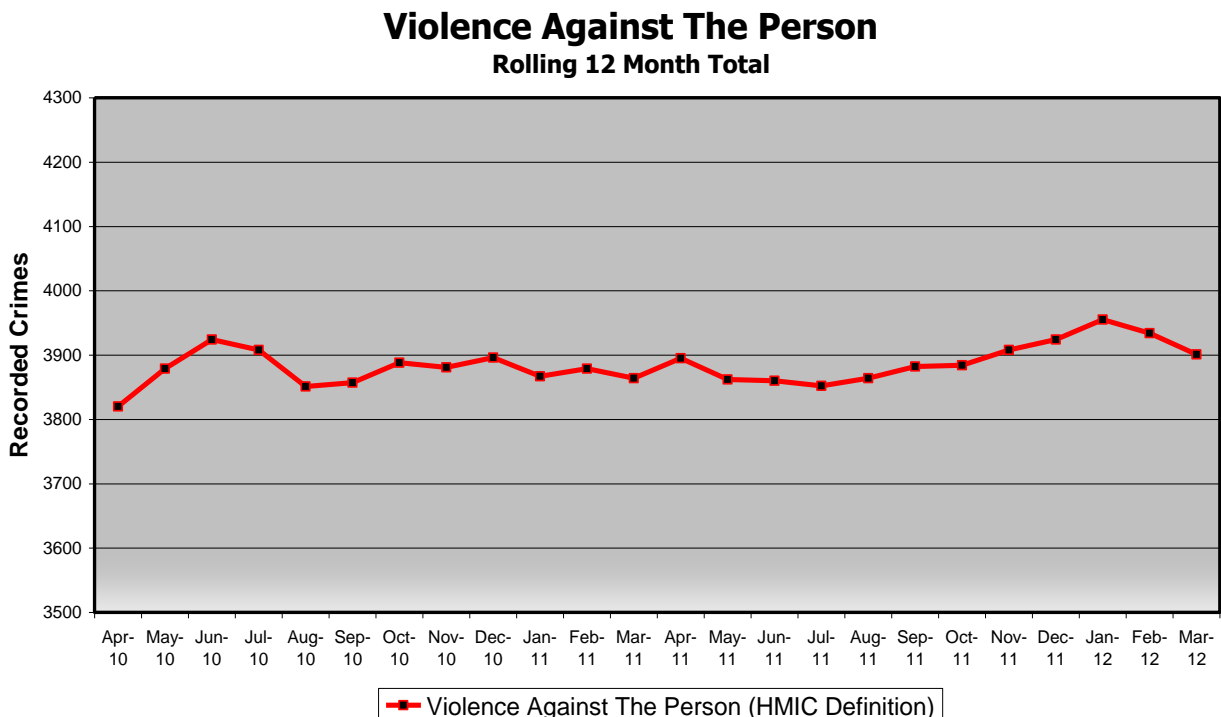
Northampton: Annual Violence Performance by Crime Group								
Crime Type	2008/09		2009/10		2010/11		2011/12	
	Volume	Annual % Change	Volume	Annual % Change	Volume	Annual % Change	Volume	Annual % Change
Violence with Injury	1937		2153	11.2%	2004	-6.9%	1991	-0.6%
Violence Without Injury	1441		1660	15.2%	1860	12.0%	1910	2.7%
Serious Sexual Offences	203		220	8.4%	257	16.8%	289	12.5%
Robbery	503		426	-15.3%	361	-15.3%	376	4.2%
Violence (exc Public Order)	4084		4459	9.2%	4482	0.5%	4566	1.9%

Violence Performance Data by Crime Group 2011/12

The graph below shows the volume of the key elements of violent crime on a 12 month rolling total in 2011/12 only.



The graph below shows the volume of serious acquisitive crime against the CSP annual targets on a 12 month rolling total.



Violence performance Data by Sector 2011/12

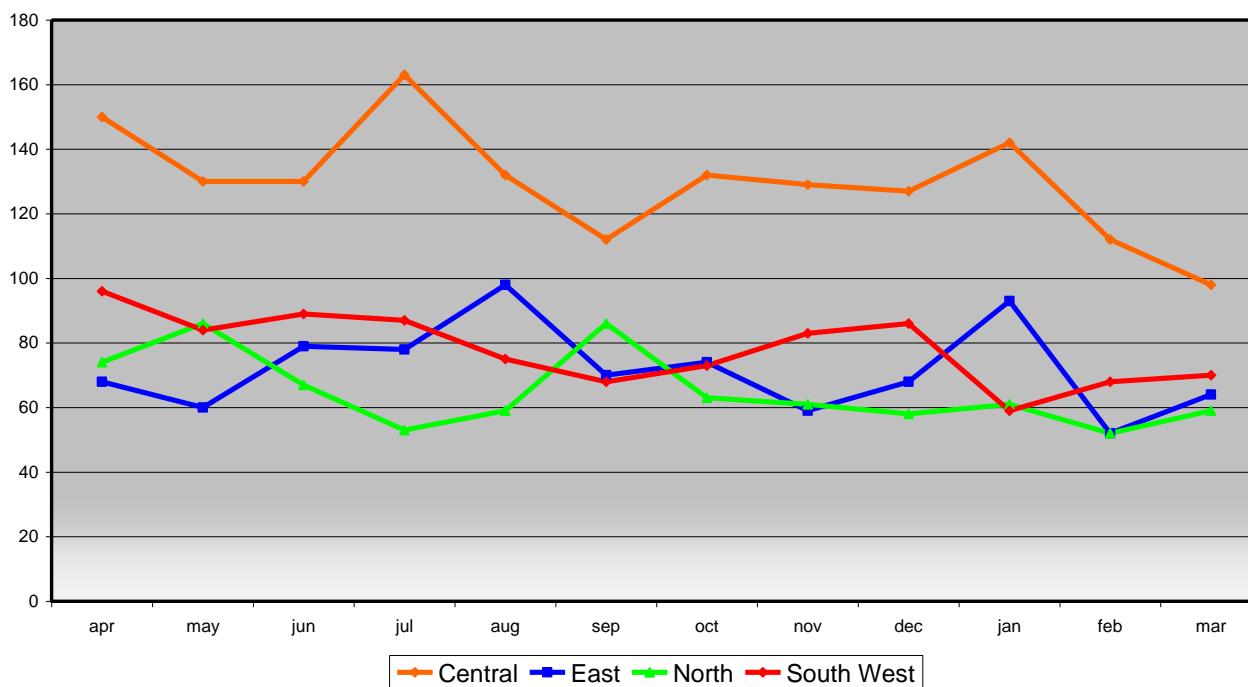
The tables below show the annual percentage change in different elements of violence in each sector of Northampton during 2011/12. NB: The 'violence' category is now a sum of the three categories above.

Central Sector				East Sector			
Crime Type	Volume		Change	Crime Type	Volume		Change
	2010/11	2011/12			2010/11	2011/12	
Assault with Less Serious Injury	709	638	-10.0%	Assault with Less Serious Injury	379	355	-6.3%
Most Serious Violence	84	86	2.4%	Most Serious Violence	25	23	-8.0%
Serious Sexual Offences	75	55	-26.7%	Serious Sexual Offences	51	60	17.6%
Violence	1690	1557	-7.9%	Violence	877	863	-1.6%

North Sector				South West Sector			
Crime Type	Volume		Change	Crime Type	Volume		Change
	2010/11	2011/12			2010/11	2011/12	
Assault with Less Serious Injury	318	328	3.1%	Assault with Less Serious Injury	409	405	-1.0%
Most Serious Violence	39	27	-30.8%	Most Serious Violence	29	27	-6.9%
Serious Sexual Offences	56	72	28.6%	Serious Sexual Offences	57	57	0.0%
Violence	795	779	-2.0%	Violence	945	938	-0.7%

The graph below shows the monthly volume of violence offences in each sector during 2011/12.

Monthly Volume of Violence Offences By Sector



Violence Performance: Top Wards in Northamptonshire 2011/12

The table below is extracted from a recent violence problem profile produced by Northants Police analysis team. As a result it includes wards from outside of Northampton Borough. The table shows five of the top ten wards for all violent crime are located in Northampton Borough, 22.9% of the violent crime in Northamptonshire occurs in these five wards.

NB: This data is for 2011/12 only. .

NB: The wards below are based upon pre 2011 ward boundaries, as the police still work to these.

Ward Name	All Violent Crime		MSV		AWLSI		Common Assault		Sexual Offences		SSO		Robbery	
		%		%		%		%		%		%		%
Castle	969	9.2 %	49	12.8 %	367	9.4 %	25 6	8.6 %	35	5.4 %	29	5.6 %	35	5.6 %
St Crispin	640	6.1 %	31	8.1%	245	6.3 %	14 2	4.8 %	28	4.3 %	21	4.0 %	36	5.7 %
Swanspool	309	2.9 %	15	3.9%	111	2.9 %	68	2.3 %	18	2.8 %	14	2.7 %	36	5.7 %
William Knibb	307	2.9 %	17	4.4%	104	2.7 %	79	2.7 %	13	2.0 %	11	2.1 %	14	2.2 %
Lumbertubs	274	2.6 %	5	1.3%	88	2.3 %	77	2.6 %	28	4.3 %	21	4.0 %	29	4.6 %
Kingswood	230	2.2 %	10	2.6%	82	2.1 %	78	2.6 %	11	1.7 %	9	1.7 %	14	2.2 %
All Saints	215	2.1 %	6	1.6%	92	2.4 %	61	2.1 %	13	2.0 %	12	2.3 %	10	1.6 %
Spencer	219	2.1 %	5	1.3%	78	2.0 %	61	2.1 %	14	2.1 %	13	2.5 %	12	1.9 %
Abbey South	200	1.9 %	12	3.1%	80	2.1 %	46	1.6 %	5	0.8 %	4	0.8 %	4	0.6 %
Kingsley	195	1.9 %	3	0.8%	72	1.9 %	62	2.1 %	18	2.8 %	15	2.9 %	16	2.6 %
Total for Ten Wards	3558	33.8 %	153	39.9%	1319	33.8%	930	31.4 %	183	28.0%	149	28.7 %	206	32.9 %

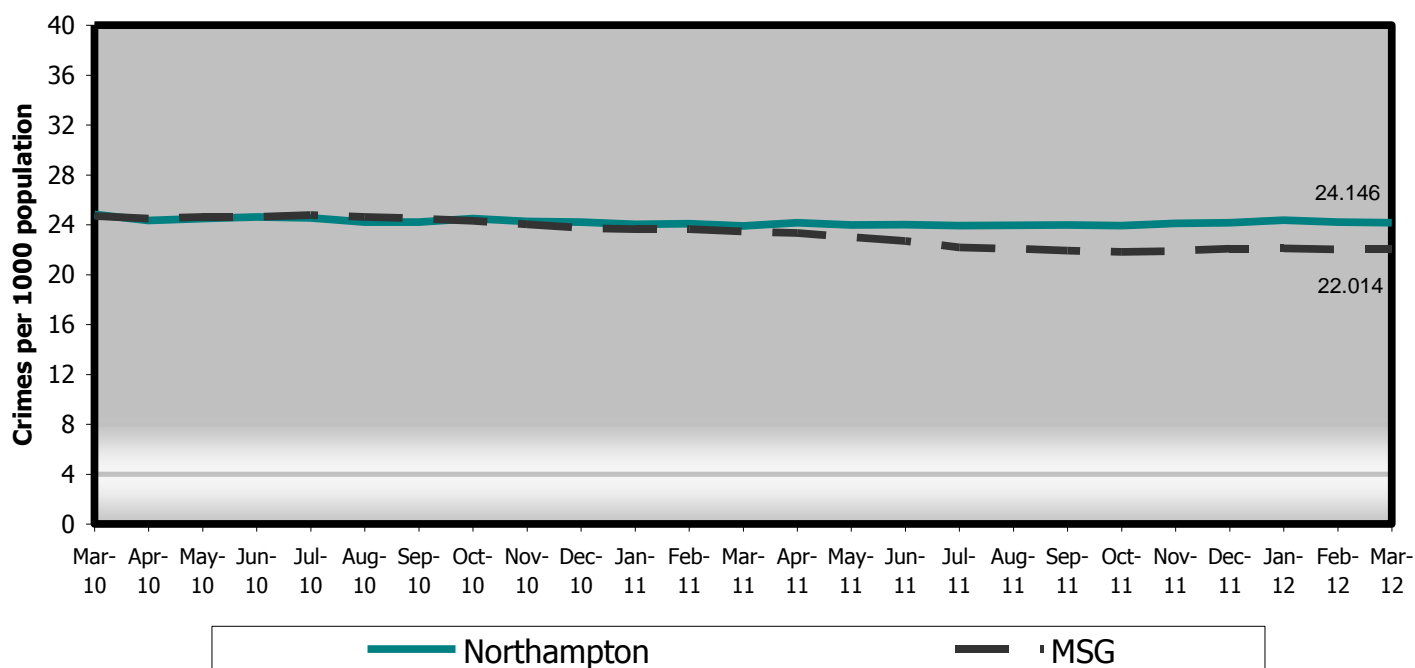
Comparative Performance Against Most Similar CSPs.

Community Safety Partnerships are placed in groups of fifteen Partnerships defined by the Home Office as having enough similar characteristics to allow a reasonable comparison of their performance: this is known as the Most Similar Group. A list of CSPs in Northampton's most similar group is below.

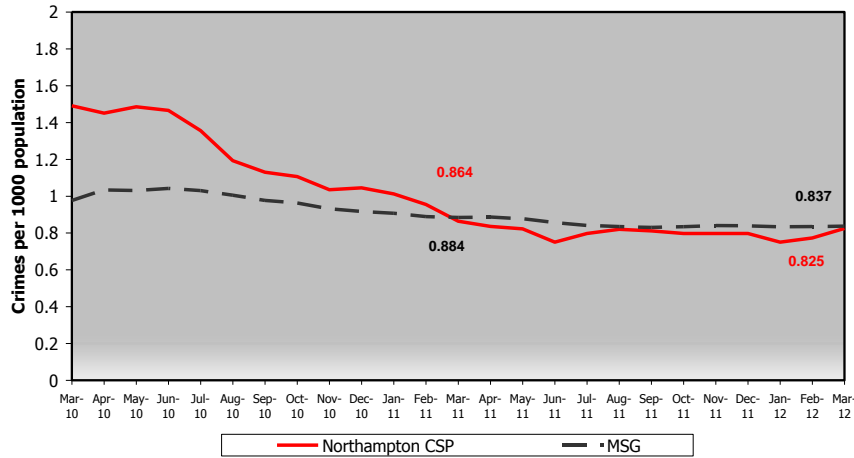
<ul style="list-style-type: none"> • Bedfordshire – Luton • Devon & Cornwall – Plymouth • Devon & Cornwall – Torbay • Gloucestershire – Gloucester • Greater Manchester – Trafford • Kent – Dartford & Gravesham • Lancashire – Blackpool • Metropolitan Police – Hillingdon 	<ul style="list-style-type: none"> • Metropolitan Police – Hounslow • Northamptonshire - Northampton • Suffolk – Ipswich • Thames Valley – Milton Keynes • Thames Valley – Slough • West Midlands – Coventry • Wiltshire - Swindon
--	--

The graphs below show Northampton CSP's performance against the average for our most similar groups. Performance is monitored in terms of crimes per 1000 population.

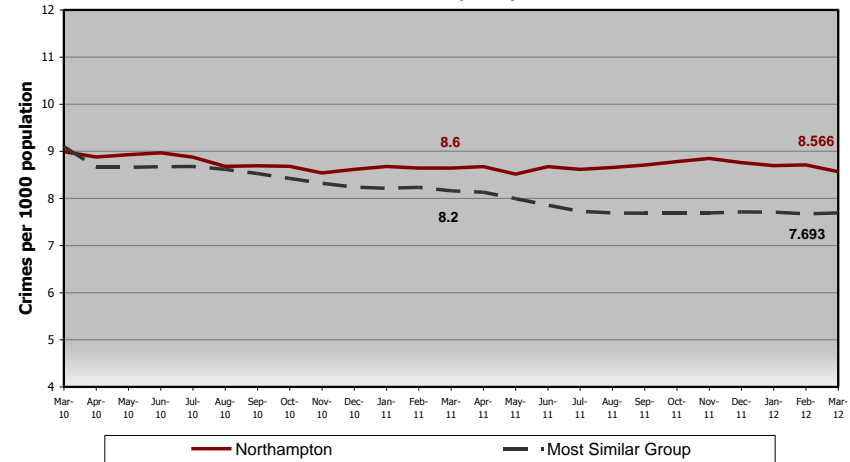
Violent Crime Most Similar Group comparison



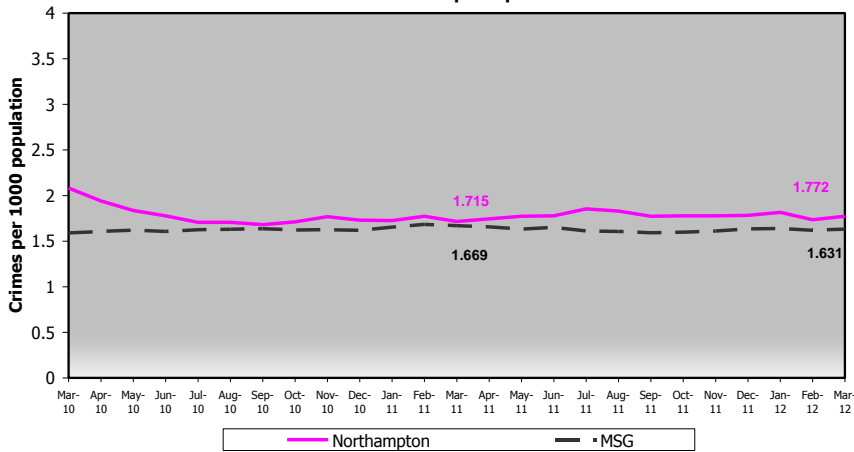
Most Serious Violence
Most Similar Group comparison



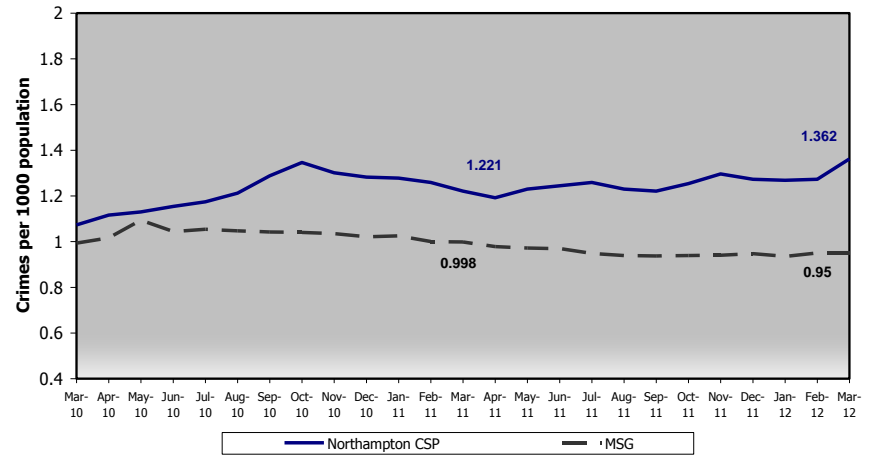
Assault with Less Serious Injury
Most Similar Group comparison



Robbery
Most Similar Group comparison



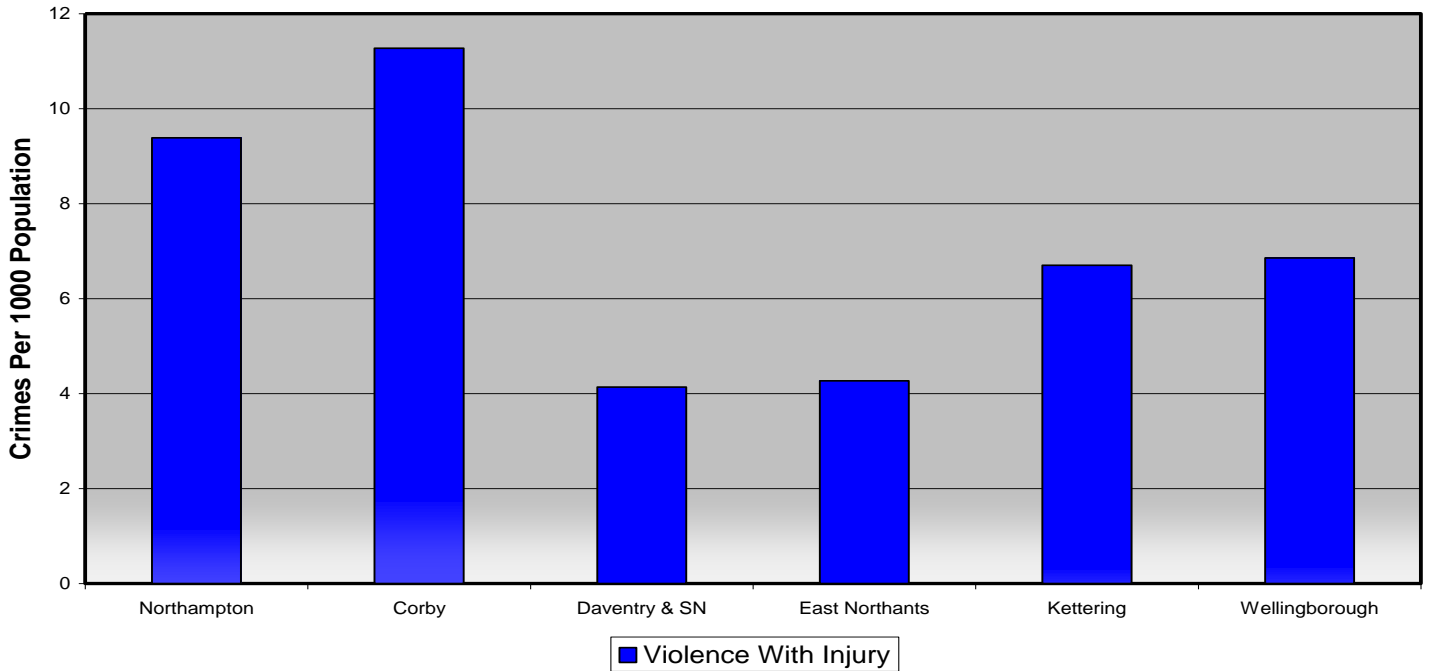
Serious Sexual Offences
Most Similar Group comparison



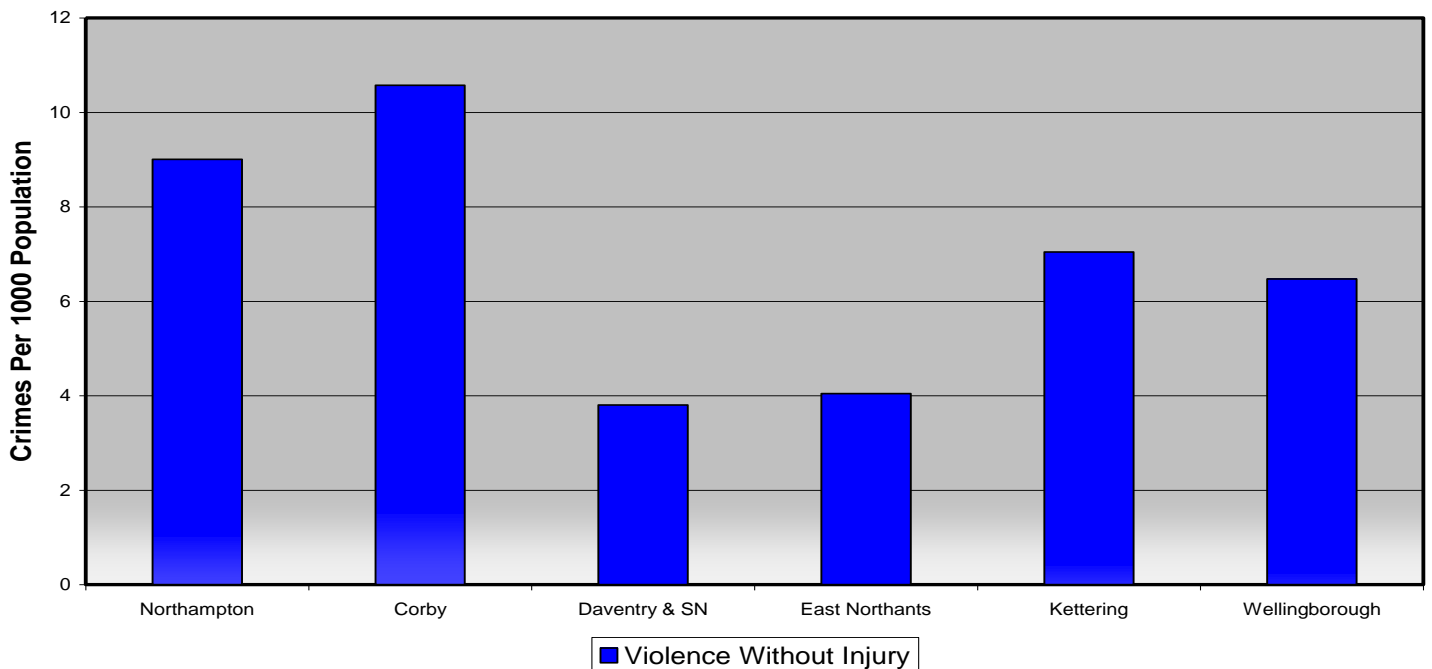
Cross County Comparative Performance

The graphs below show how Northampton compares to other localities within the county for different elements of violent crime. To allow reasonable comparison, accounting for population differences, the volume of crime is shown in terms of crimes per 1000 population.

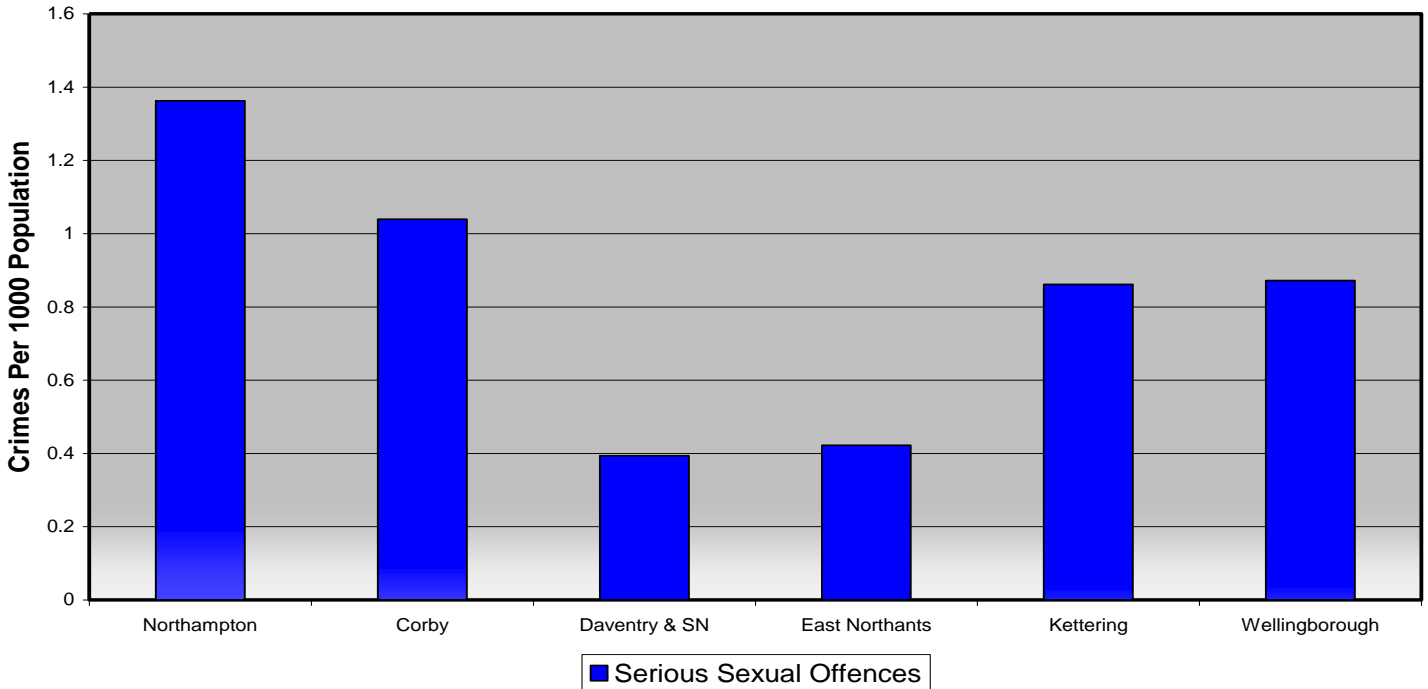
Violence With Injury: Crimes Per 1000 Population (2011/12)



Violence Without Injury: Crimes Per 1000 Population (2011/12)



Serious Sexual Offences: Crimes Per 1000 Population (2011/12)



Robbery: Crimes Per 1000 Population (2011/12)

